

FIATALLIS EXCAVATOR

FX210LC



- NET FLYWHEEL POWER 102 kW/137 HP
- OPERATING WEIGHT 19,900 kg/43,780 lb.



FX210 LC Specifications



ENGINE

NET FLYWHEEL POWER (SAE)102 kW* 137 HP
 The net flywheel power of the vehicle engine under conditions of temperature and pressure specified in SAE standard J1349, i.e. at 25°C/77°F and 100 kPa/29.63 in. Hg after deductions have been made for fan, alternator, lubrication oil pump, water pump, air cleaner, fuel pump and muffler.

* Values given in kW derive from the HP to kW conversions of the International System of Units.

Make and modelCummins 6BT 5.9C
 Typeturbocharged, direct injection, 4-cycle diesel
 Governed rpm2000
 Number of cylinders6
 Displacement5.91 L 360 cu in.
 Bore x stroke102 x 120 mm 4.0" x 4.7"
 Auto-Idling device, which automatically reduces the engine rpm when implement controls are in neutral.



ELECTRICAL SYSTEM

Voltage24 V
 Batteries in series, maintenance free2
 rating (total)85 Ah
 Alternator30 amp
 Starter4 kW



HYDRAULIC SYSTEM

FIATALLIS' ETS (Electronic Total Control System) can achieve maximum job efficiency while reducing fuel consumption/noise.

E-P Control (Computer aided Engine-Pump Control System)

OHS (Optimum Hydraulic System) assures fully independent and combined operations.

FPS (Fuel saving Pump System)

Main pumps2 variable displacement
 axial piston pumps
 max. oil flow2 x 220 l/min **2 x 58.1 gpm**
 Pilot pumpgear pump
 max. oil flow33.6 l/min **8.8 gpm**
 Relief valve pressure:
 boom/dipper stick/bucket/swing circuit285 bar **4050 psi**
 Travel circuit350 bar **5080 psi**

Hydraulic cylinders

Boom lift2
 bore x stroke125 x 1315 mm **4.92 x 51.8 in.**
 Dipper stick1
 bore x stroke135 x 1630 mm **5.31 x 64.2 in.**
 Bucket1
 bore x stroke120 x 1055 mm **4.72 x 41.5 in.**
 Cylinder cushioning is provided for boom and dipper stick cylinders to absorb shock when pistons reach the end of their stroke.



TRANSMISSION

Typehydrostatic, two speed
 Travel motorsaxial piston type, in-shoe mounted
 Brakesautomatic disc type, spring-applied
 hydraulically released
 Final driveoil bath, planetary reduction
 Gradeability (continuous)35° **70%**
 Travel speed:
 high0 to 3.8 km/h **2.4 mph**
 low0 to 3.0 km/h **1.9 mph**



UNDERCARRIAGE

Sealed bulldozer type undercarriage. Lifetime lubricated idlers and rollers. Hydraulic track adjusters.
 Track rollers (per track)10
 Carrier roller (per track)2
 Gauge2,350 mm **7'9"**
 Length of track on ground3,807 mm **11'10"**
 Shoes width (Std.)600 mm **24"**
 Heavy-Duty track frame.



CONTROLS

Fully power-assisted controls: two single-lever joystick controls govern the digging equipment and the swing mechanism. Two pivot pedals control forward and reverse travel and counter-rotation. Two levers attached to the pedals allow machine travel to be manually controlled.

Moving the control levers diagonally, the two functions can be performed simultaneously. A safety lever on the left-hand side of the console neutralizes the whole control system.



SWING

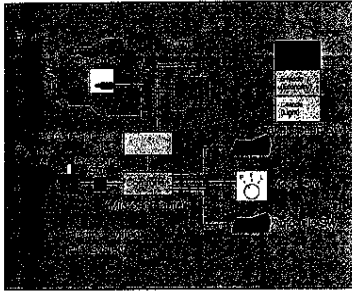
Swing motorone, axial piston type
 Swing brakeautomatic, disc type, spring applied
 hydraulically released
 Final driveoil bath, planetary reduction
 Swing speed13.7 rpm
 Swing circlegrease bath



CAPACITIES

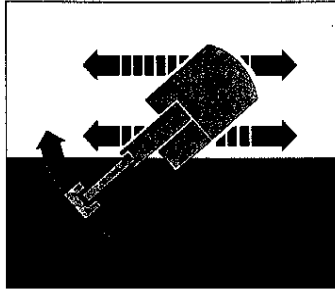
| | | |
|-----------------------|------------|------------------|
| Engine..... | liters | U.S. Gal |
| lube oil | 14 liters | 3.7 gal. |
| coolant | 19 liters | 5.0 gal. |
| Fuel tank | 284 liters | 75.0 gal. |
| Hydraulic system..... | 220 liters | 58.1 gal. |

FX210 LC ETS (Electronic Total Control System)



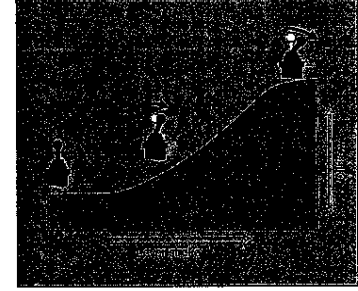
Mode Selection

The Operator can select Power, Economy or a Light digging mode. These settings allow the operator to select maximum digging performance or maximum control.



OHS

The advanced Optimum Hydraulic System produces both independent and full simultaneous functions. OHS also yields maximum control and smoothness of all hydraulic functions.



FPS

The fuel-saving pump system is designed to eliminate wasted hydraulic energy. In other words, when the control lever is positioned at neutral, the pump's flow rate is minimized. When the lever is moved, maximum pump flow will then occur as it is needed.

FX210 LC - Lift Capacities (SAE J1097)

Dipperstick 2,400 mm – 7' 11"

* Indicates load limited by hydraulic capacity

| Hook Height | Radius of Load | Over Front | Over side | Over Front | Over side | Over Front | Over side | Over Front | Over side | Max. Reach | Over Front | Over side |
|--------------------|----------------|------------------|------------------|------------------|------------------|------------------|------------------|------------------|------------------|------------|------------|-----------|
| | | 3.00 m. 9'10" | 3.00 m. 9'10" | 4.50 m. 14'9" | 4.50 m. 14'9" | 6.00 m. 19'8" | 6.00 m. 19'8" | 7.50 m. 24'7" | 7.50 m. 24'7" | | | |
| 6.00 m. 19'8" | Kg. | | | | | 4,500* | 4,500* | | | 7.00 m. | 4,500* | 3,600 |
| | Lbs. | | | | | 9,900 | 9,900 | | | 23'0" | 9,900 | 7,900 |
| 4.50 m. 14'9" | Kg. | | | | | 5,000* | 4,500 | 4,700* | 3,100 | 7.70 m. | 4,800 | 2,900 |
| | Lbs. | | | | | 11,000 | 9,900 | 10,400 | 6,800 | 25'3" | 10,100 | 6,400 |
| 3.00 m. 9'10" | Kg. | | | 7,600* | 6,700 | 5,800* | 4,300 | 4,700 | 3,000 | 8.10 m. | 4,100 | 2,600 |
| | Lbs. | | | 16,700 | 14,800 | 12,800 | 9,500 | 10,400 | 6,600 | 26'7" | 9,000 | 5,700 |
| 1.50 m. 4'11" | Kg. | | | 9,300* | 6,200 | 6,500 | 4,000 | 4,500 | 2,800 | 8.20 m. | 4,000 | 2,500 |
| | Lbs. | | | 20,500 | 13,700 | 14,300 | 8,800 | 9,900 | 6,200 | 26'11" | 8,800 | 5,500 |
| 0.00 m. 0'0" | Kg. | 7,400* | 7,400* | 10,000 | 5,900 | 6,300 | 3,800 | 4,400 | 2,700 | 8.00 m. | 4,000 | 2,500 |
| | Lbs. | 16,300 | 16,300 | 22,000 | 13,000 | 13,900 | 8,400 | 9,700 | 6,000 | 26'3" | 8,800 | 5,500 |
| -1.50 m. -4'11" | Kg. | 11,900* | 11,400 | 9,900 | 5,800 | 6,200 | 3,800 | | | 7.40 m. | 4,400 | 2,700 |
| | Lbs. | 26,200 | 25,100 | 21,800 | 12,800 | 13,700 | 8,400 | | | 24'4" | 9,700 | 6,000 |
| -3.00 m. -9'10" | Kg. | 14,000* | 11,700 | 9,700 | 5,800 | 6,200 | 3,800 | | | 6.50 m. | 5,400 | 3,300 |
| | Lbs. | 30,800 | 25,800 | 21,400 | 12,800 | 13,700 | 8,400 | | | 21'4" | 11,900 | 7,300 |
| -4.50 m. -14'9" | Kg. | 11,200* | 11,200 | 7,900* | 6,100 | | | | | 5.00 m. | 6,900* | 5,100 |
| | Lbs. | 24,700 | 24,700 | 17,400 | 13,400 | | | | | 16'5" | 15,200 | 11,200 |

Dipperstick 2,900 mm – 9' 6"

* Indicates load limited by hydraulic capacity

| Hook Height | Radius of Load | Over Front | Over side | Over Front | Over side | Over Front | Over side | Over Front | Over side | Max. Reach | Over Front | Over side |
|--------------------|----------------|------------------|------------------|------------------|------------------|------------------|------------------|------------------|------------------|------------|------------|-----------|
| | | 3.00 m. 9'10" | 3.00 m. 9'10" | 4.50 m. 14'9" | 4.50 m. 14'9" | 6.00 m. 19'8" | 6.00 m. 19'8" | 7.50 m. 24'7" | 7.50 m. 24'7" | | | |
| 6.00 m. 19'8" | Kg. | | | | | | | 3,400* | 3,000 | 7.60 m. | 3,000* | 3,000 |
| | Lbs. | | | | | | | 7,500 | 6,600 | 24'11" | 6,600 | 6,600 |
| 4.50 m. 14'9" | Kg. | | | | | 4,500* | 4,500* | 4,300 | 3,100 | 8.30 m. | 3,100* | 2,600 |
| | Lbs. | | | | | 9,900 | 9,900 | 9,500 | 6,800 | 27'3" | 6,800 | 5,700 |
| 3.00 m. 9'10" | Kg. | 10,700* | 10,700* | 6,900* | 6,900* | 5,400 | 4,300 | 4,700 | 3,000 | 8.60 m. | 3,200 | 2,300 |
| | Lbs. | 23,600 | 23,600 | 15,200 | 15,200 | 11,900 | 9,500 | 10,400 | 6,600 | 28'3" | 7,000 | 5,100 |
| 1.50 m. 4'11" | Kg. | 7,100* | 7,100 | 8,700* | 6,300 | 6,400 | 4,000 | 4,500 | 2,800 | 8.70 m. | 3,500 | 2,200 |
| | Lbs. | 15,700 | 15,700 | 19,200 | 13,900 | 14,100 | 8,800 | 9,900 | 6,200 | 28'7" | 7,700 | 4,900 |
| 0.00 m. 0'0" | Kg. | 7,600* | 7,600* | 9,900* | 5,900 | 6,200 | 3,800 | 4,400 | 2,700 | 8.50 m. | 3,600 | 2,200 |
| | Lbs. | 16,700 | 16,700 | 21,800 | 13,000 | 13,700 | 8,400 | 9,700 | 6,000 | 27'11" | 7,900 | 4,900 |
| -1.50 m. -4'11" | Kg. | 10,600* | 10,600* | 9,800 | 5,700 | 6,100 | 3,700 | 4,300 | 2,600 | 8.00 m. | 3,900 | 2,400 |
| | Lbs. | 23,400 | 23,400 | 21,600 | 12,600 | 13,400 | 8,200 | 9,500 | 5,800 | 26'3" | 8,600 | 5,300 |
| -3.00 m. -9'10" | Kg. | 14,800* | 11,500 | 9,900 | 5,700 | 6,100 | 3,700 | | | 7.20 m. | 4,600 | 2,900 |
| | Lbs. | 32,600 | 25,300 | 21,800 | 12,600 | 13,400 | 8,200 | | | 23'7" | 10,100 | 6,200 |
| -4.50 m. -14'9" | Kg. | 12,400* | 11,800 | 8,600* | 5,900 | | | | | 5.80 m. | 6,200 | 3,900 |
| | Lbs. | 27,300 | 26,000 | 19,000 | 13,000 | | | | | 19'0" | 13,700 | 8,600 |

Dipperstick 3,500 mm – 11' 6"

* Indicates load limited by hydraulic capacity

| Hook Height | Radius of Load | Over Front | Over side | Over Front | Over side | Over Front | Over side | Over Front | Over side | Max. Reach | Over Front | Over side |
|--------------------|----------------|------------------|------------------|------------------|------------------|------------------|------------------|------------------|------------------|------------|------------|-----------|
| | | 3.00 m. 9'10" | 3.00 m. 9'10" | 4.50 m. 14'9" | 4.50 m. 14'9" | 6.00 m. 19'8" | 6.00 m. 20'0" | 7.50 m. 24'7" | 7.50 m. 24'7" | | | |
| 6.00 m. 19'8" | Kg. | | | | | | | 3,600* | 3,200 | 8.30 m. | 2,400* | 2,400* |
| | Lbs. | | | | | | | 7,900 | 7,100 | 27'3" | 5,300 | 5,300 |
| 4.50 m. 14'9" | Kg. | | | | | | | 3,800* | 3,100 | 8.90 m. | 2,400* | 2,200 |
| | Lbs. | | | | | | | 8,400 | 6,800 | 29'2" | 5,300 | 4,900 |
| 3.00 m. 9'10" | Kg. | | | | | 4,800* | 4,400 | 4,200* | 3,000 | 9.30 m. | 2,500* | 2,000 |
| | Lbs. | | | | | 10,600 | 9,700 | 9,300 | 6,600 | 30'6" | 5,500 | 4,400 |
| 1.50 m. 4'11" | Kg. | 10,400* | 10,400* | 7,900* | 6,300 | 5,800* | 4,000 | 4,500 | 2,800 | 9.30 m. | 2,700* | 1,900 |
| | Lbs. | 22,900 | 22,900 | 17,400 | 13,900 | 12,600 | 8,800 | 9,900 | 6,200 | 30'6" | 5,900 | 4,200 |
| 0.00 m. 0'0" | Kg. | 7,800* | 7,800* | 9,400* | 5,900 | 6,200 | 3,800 | 4,400 | 2,700 | 9.20 m. | 3,000 | 1,900 |
| | Lbs. | 17,200 | 17,200 | 20,700 | 13,000 | 13,700 | 8,400 | 9,700 | 6,000 | 30'2" | 6,600 | 4,200 |
| -1.50 m. -4'11" | Kg. | 9,600* | 9,600* | 9,700 | 5,600 | 6,000 | 3,600 | 4,200 | 2,600 | 8.70 m. | 3,400 | 2,000 |
| | Lbs. | 21,200 | 21,200 | 21,400 | 12,300 | 13,200 | 7,900 | 9,300 | 5,800 | 28'7" | 7,500 | 4,400 |
| -3.00 m. -9'10" | Kg. | 12,900* | 11,100 | 9,700 | 5,600 | 6,000 | 3,600 | 4,200 | 2,500 | 8.00 m. | 3,900 | 2,300 |
| | Lbs. | 28,400 | 25,500 | 21,400 | 12,300 | 13,200 | 7,900 | 9,300 | 5,600 | 26'3" | 8,600 | 5,100 |
| -4.50 m. -14'9" | Kg. | 13,500* | 11,200 | 9,100* | 5,700 | 6,100 | 3,600 | | | 6.80 m. | 5,000 | 3,000 |
| | Lbs. | 29,800 | 24,700 | 20,100 | 12,600 | 13,400 | 7,900 | | | 22'4" | 11,000 | 6,600 |

FX210 LC Standard Equipment and Dimensions

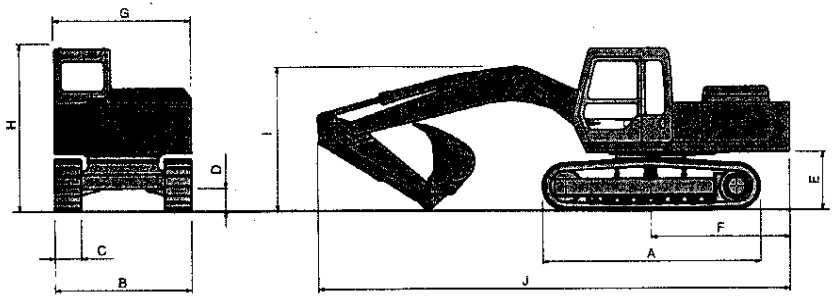
- Air cleaner
- Alternator, 30 Amp.
- Anti-freeze
- Batteries, maintenance free, two 12 Volt, 85Ah
- Boom, monoblock with lift cylinders.
- **Cab:** digital clock, front windshield wiper with washer, fuel gauge, heater, hourmeter, radio provision (antenna and loudspeaker), seat, suspension with cloth fabric, seat belt, skylight, roll up front windshield and sliding side window, sound suppression, tinted safety glass, travel pedals with hand levers.

- Counterweight
- Dipperstick, 2.9 M **9'6"**, includes bucket linkage
- **Engine:** Cummins 6BT 5.9C, turbo-charged, 358 cu. in., 6 cylinder, 137 net flywheel horsepower at 2000 rpm, automatic idling system

- **Electronic Data Monitor (E.D.M.):**
Warning lights for: air filter restriction, battery charge, engine coolant level and temperature, engine oil level, pressure and temperature, fuel level, General malfunction warning light and alarm.
Indicator lights for: automatic engine idling, fuel level, headlights, hydraulic oil level and filter restriction, travel mode.

- Hinged side doors
- Horn
- **Hydraulic system:** pilot operated control valves, 2 spools (4+5) with auxiliary valves, automatic de-aeration system, cross sensing (engine and load), E-P Control (3 operating modes), FPS control (Fuel Saving Pump System), OHS (Optimum Hydraulic System), main pump - double axial piston type, pilot circuit - gear type pump, hydraulic oil heat exchanger, swing motor with automatic disc brake and cushion valve, travel motors, 2, hydrostatic with automatic wet disc brakes, 2 speeds, in-shoe design.

- Lights, 2 front
- Lubrication system, centralized
- Master electrical disconnect switch
- Sealed pins, boom and bucket linkage
- Starting, 24 volt direct electric
- Swing ring, greased-bath type
- Tilttable hood
- Tool compartment, includes tool kit
- Track adjusters, hydraulic
- Track carrier rollers, 2 each side
- Track chain, sealed
- Track bottom rollers, 10 each side
- Track shoes, 600 mm **23.75"** semi-grouser
- Vandalism protection



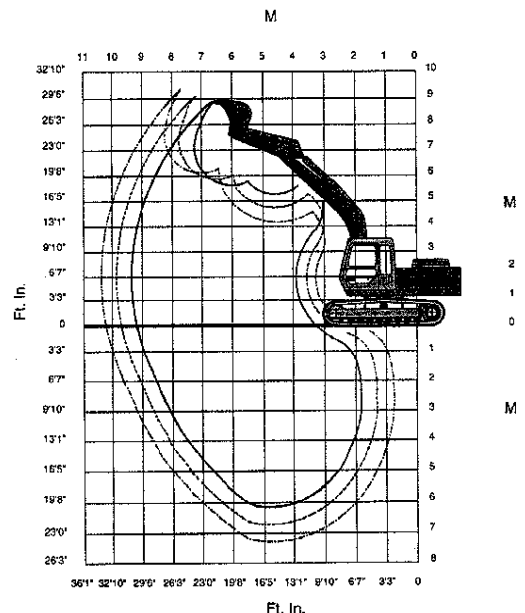
| A | B | C | D | E | F | G | H | I | J |
|-------|------|-----|-----|------|------|------|------|------|-------|
| 4410 | 2950 | 600 | 450 | 1060 | 2745 | 2500 | 2860 | 2860 | 9570 |
| 14'6" | 9'8" | 24" | 18" | 3'6" | 9'0" | 8'2" | 9'5" | 9'5" | 31'5" |

Increasing the width of the track shoes will increase the width of the undercarriage to the same degree.

| Operating Performances | One-piece boom 5.68 m 18'8" | | | | | | |
|-----------------------------|------------------------------------|--------|--------|--------|--------|--------|--------|
| | | m. | in. | m. | in. | m. | in. |
| Dipperstick | | 2.40 | 7'11" | 2.90 | 9'6" | 3.50 | 11'6" |
| Max. reach at ground level | | 9.23 | 30'4" | 9.74 | 31'11" | 10.34 | 33'11" |
| Digging depth | | 6.08 | 19'11" | 6.57 | 21'7" | 7.17 | 23'6" |
| Dump height | | 6.32 | 20'9" | 6.63 | 21'9" | 6.70 | 22'0" |
| Breakout force (SAE J 1179) | Kg lb. | 11,000 | 24,250 | 11,000 | 24,250 | 11,000 | 24,250 |
| Digging force (SAE J 1179) | Kg lb. | 10,700 | 23,540 | 8,800 | 19,360 | 7,700 | 16,940 |

FX210 LC Opt. Equip.

- Auxillary hydraulic function predisposition
- Cold weather starting aid
- Buckets:
 - 610-1,067 mm **24" to 42"**
 - .46-1.02 m³ **.60 to 1.34 cu. yd.**
- Dipperstick 2,400 mm **7'11"**
- Dipperstick 3,500 mm **11'6"**
- Track shoes: 700 mm **28"**
- Track shoes: 800 mm **32"**



The information contained in this brochure is intended to be of a general nature only. The manufacturer may at any time and from time to time, for technical or other necessary reasons, modify any of the details or specifications of the product described in this brochure. Illustrations do not necessarily show products in standard condition. The dimensions, weights and capacities shown herein, as well as any conversion data used, are approximate only and are subject to variations within normal manufacturing techniques. To be sure of getting accurate, detailed and up-to-date information, any intending buyer should consult his nearest dealer, representative, or distributor.